



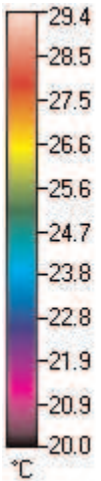
www.equinethermography.co.uk

Equine Thermal Imaging

a leading edge technology for the benefit of horses and their owners.

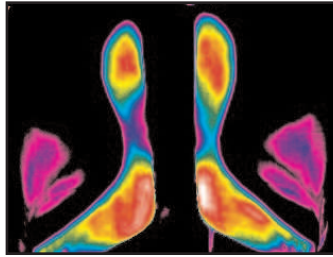
**Is your horse completely happy with his saddle?
Do you suspect pinching or pressure points?
Is your horse difficult to get the right saddle fit for?**

A new way of supporting correct saddle fitting....using infrared thermal technology



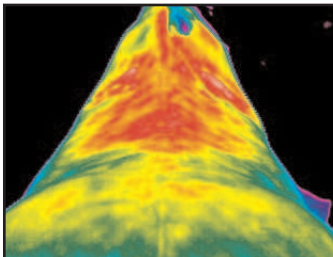
Do you want?

- A quick, easy and safe method
- Direct visual evidence of how your saddle sits
- To take out the guesswork
- Results you can see.
- Information you can act upon



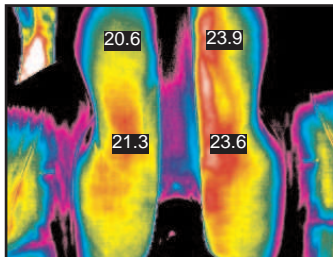
Top Image:

This saddle is bridging; you can clearly see that the pressure is sitting at 4 distinct points.



Middle Image:

The correlating back images immediately after removal of this saddle; we can see if and where the saddle is pinching or moving.



Bottom Image:

Pressure is being borne down through the right panel.

How it works:

Infra-red thermography is a completely non-invasive, non-touch method of showing hot and cold spots which provides you with factual information.

What will I get?

- You will get an excellent, real-time representation of contact and pressure areas on the underside of your saddle and the back of your horse post lunge or similar.
- On the day you will receive postcard sized print outs of images - with temperature comparisons if required.

Guaranteed Satisfaction!

Money back guarantee.

Call

01483 414330

07771 870389

Special Offer!

Big Discounts for Group Bookings

1-2 horses £45.00 each

3-5 horses £40.00 each

6-7 horses £35.00 each

8+ horses £30.00 each

www.equinethermography.co.uk